

PayCell® MPT500 Series Technical Specifications

Architecture



| | |
|------------------|---|
| Processor: | 32bit - ARM 7 Technology - 60MHz |
| Memory: | 4MB FLASH (Upgradeable to 8MB), 8MB SDRAM, 128KB SRAM (battery backed up) |
| Real Time Clock: | Hardware based real-time-clock |

Interfaces and Communication



| | |
|------------------|--|
| Card Interfaces: | ISO 3 track magnetic card reader (tracks 1,2 and 3) Full Size ISO 7816 smart card interface (1.8v, 3v & 5v) Up to three Security Access Modules (1.8v, 3v & 5v) Separate SIM card interface (PayCell® MPT500/520 range) Contactless card interface supporting Mifare™, ISO14443 Type A & B (PayCell® MPT520 range) |
| Communications: | One RS232 serial port (full compliment) Integrated GSM /GPRS module (PayCell® MPT500 range) Integrated 802.11b WLAN module (PayCell® MPT510 range) Optional Class 2 Bluetooth Module (PayCell® MPT500/510/520 range) |
| .PSTN Modem: | External PSTN modem |



Physical Characteristics

| | |
|---------------|---|
| Display: | Full backlit graphics with very high resolution LCD (160 x 104 pixels) Optional touch screen |
| Keypad: | Secure 16 button backlit keypad with 4 way menu key and 2 Function keys |
| Printer: | Integrated high speed easy load thermal printer, up to 15 lines per second, full graphics |
| Battery Pack: | Quick charge NiMH battery pack (1 hour to full charge), with 12 hours standby 600+ GPRS transactions possible on one full battery charge (PayCell® MPT500) |
| Power Supply: | Universal 100 – 240Vac power supply adapter Optional vehicle 12V / 24V DC adapter |
| Weight: | 525g (with battery and paper roll) |
| Dimensions: | 185mm (L) x 85mm (W) x 60mm (H) |

Environmental

| | |
|--------------|--|
| Temperature: | 0 °C to 50 °C (Operating), -15 °C to + 70 °C (Storage) |
| Humidity: | 0% to 80% non condensing |

Certification and Approvals

| | |
|------------|--|
| Approvals: | Visa offline PED certified EMV Level 1 and 2 (EMV 4) certified CE APACS Common criteria (in progress) |
|------------|--|

MPT500 Series Charging Cradle Technical Specifications

Interfaces and Communications

| | |
|-----------------|--|
| Interfaces: | Either One RS232 serial port (full compliment) OR one USB port |
| Communications: | Integrated PSTN modem (V34) OR Ethernet Optional Bluetooth module |

Physical Characteristics

| | |
|---------------|--|
| Power Supply: | Universal 100 – 240Vac power supply adapter, LED indicator charging state (multi colour) |
| Weight: | 350gms |
| Dimensions: | 215mm (L) x 105mm (W) x 60mm (H) |



Thyron Systems Ltd
St. Andrews, The Belfry, Colonial Way, Watford, Hertfordshire WD24 4WH

Tel: +44 (0) 1923 236050

Fax: +44 (0) 1923 236630

www.thyron.com



PayCell® MPT 500 Series

Secure Card Transaction Terminal

- > Fully portable terminal designed for mobile transactions
- > Supports multiple card interfaces, magnetic, smart contact and smart contactless
- > Supports wireless interfaces, GSM, GPRS, Wireless LAN and Bluetooth, to suit your operational needs
- > Exceptional battery performance to provide true mobile capabilities when there is no power source
- > Secure Pin Entry keyboard to support Chip and PIN cards



[mobile]

[retail]

[transport]

[www.thyron.com]

Overview

Thyron's PayCell® MPT series delivers some of the highest levels of performance and features, built into one of the smallest footprints of any hand held card transaction terminal available today. Developed as a result of Thyron's years of proven experience in designing and manufacturing mobile/portable card acceptance devices, the PayCell® MPT 500 terminals deliver the functionality, security and performance that any mobile transaction business demands.

The PayCell® MPT 500 series terminals supports all of the widely used card interfaces, magnetic, smart contact and contactless; connects to the widest number of wide and local area wireless networks available to provide the right connectivity to meet your operational needs.

All terminals in the PayCell® MPT range have a 32 Bit RISC ARM processor with a secure PIN entry keyboard to support the demands for increasing levels of transaction security without compromising transaction speed. The PayCell® MPT 500 range is modular in design allowing different configurations to be applied to a variety of vertical markets, mainly based on the need to carry out a card based transaction in a wireless environment.

The PayCell® MPT 500 can also be supplied with an additional desk or wall mounted charging cradle. This allows the terminal to be placed neatly in its operating environment and be recharged when not in use. Alternatively the charging cradle can support RS232, PSTN or Ethernet connectivity to allow transactions to be offloaded to a host system or as a back up in case of wireless communications failure.



PayCell® MPT Range Configurations

[mobile]

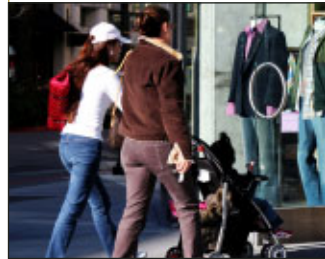
PayCell® MPT500
GSM/GPRS



- > Taxis
- > Market Traders
- > Delivery
- > Rescue services
- > Outdoor events

[retail]

PayCell® MPT510
Wireless LAN



- > Restaurants
- > Clubs
- > Hotels
- > Catering
- > Leisure Centres

[transport]

PayCell® MPT520
Contactless



- > Ticket issuing
- > Ticket Validation and checking
- > Ticket payment collection
- > Cashless solutions
- > Concessionary schemes



The PayCell® MPT500 is designed to provide the best platform for the requirements of mobile merchants that wish to take payments remotely away from traditional landline communication. The PayCell® MPT500's specific configuration is an integral GSM/GPRS modem that connects to the banking networks over wireless networks, thus obtaining card authorisation without the need to connect to a telephone or network point.

GPRS provides an always on/always ready connection that can gain authorisation in as little as 4-5 seconds. Not only does this allow the mobile trader to ensure that he can take card payments remotely, the speed of transaction is also useful for queue busting operations at temporary, busy periods typically in outdoor events.

The PayCell® MPT500 can also have an integrated Bluetooth module installed to permit simple integration to other hand held computing devices such as PDAs and other mobile computing systems



The PayCell® MPT510 is wireless LAN configured to provide the perfect terminal hardware platform for "pay at table" operations in hotel and hospitality environments. The PayCell® MPT510 has an internal 802.11b WLAN card that can connect to a local restaurant or hotel EPOS system, which in turn has an integrated card authorisation or EFT server.

Alternatively the PayCell® MPT510 can connect directly to an ADSL/WLAN access point and route transactions directly into authorisation networks over I/P. This provides a simple and cost effective way to deploy portable payment terminals into smaller restaurants and fine dining establishments.

Like all models in the PayCell® MPT range the PayCell® MPT510 can have a Bluetooth module option to allow integration to other hand held devices such as table ordering systems.



The PayCell® MPT520 range has been designed from the outset to support the ever-increasing demand for processing and verification of contactless cards in the transportation sector. The PayCell® MPT520 has an internal contactless interface that supports ISO 14443 A/B and Mifare contactless cards.

The card interface is uniquely positioned in the keyboard of the terminal so the card can be presented for verification or can alternatively be inserted into the contact reader slot under the keypad. This also allows the MPT520 to process dual interface cards also.

The PayCell® MPT520 range also has a GPRS option to allow wide area connection to near real time systems (Fare staging) or to even connect to the banking network to process credit card transactions.

The PayCell® MPT520 can have an integral Bluetooth module to allow integration to other on board transport systems such as Ticket issuing machines.



Features

- > Totally Portable
- > Light, less than 525 gms
- > Multiple configurations for total flexibility
- > Outstanding Battery performance
- > Supports wide range of wireless technologies
- > Supports all major card interfaces
- > Integral easy load printer
- > Very high resolution backlit display
- > Secure PIN Pad
- > Charging Cradle option

